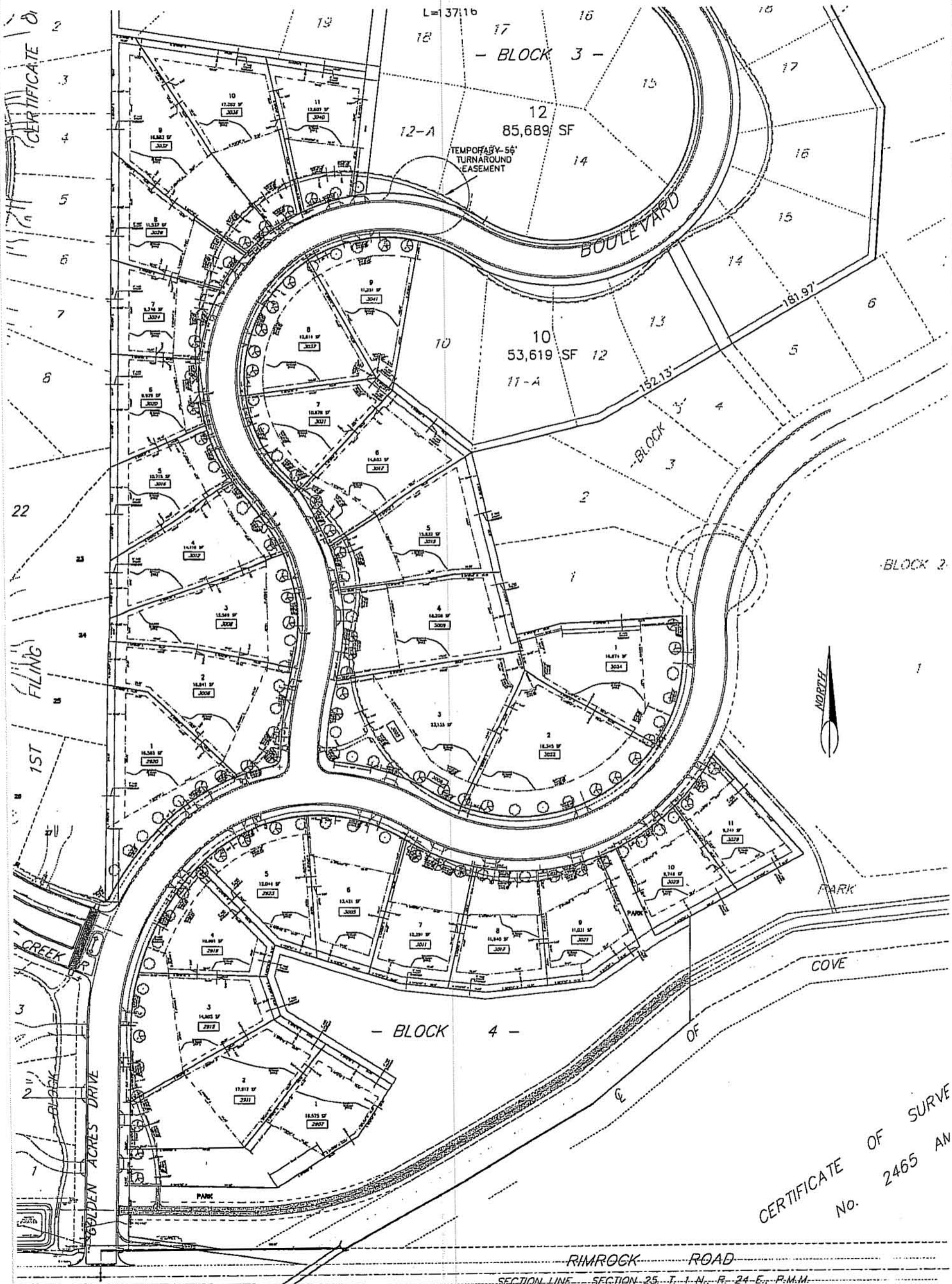


# REFLECTIONS AT COPPER RIDGE SUBDIVISION

BEING LOT 1, BLOCK 1 OF COPPER-FALCON SUBDIVISION  
SITUATED IN THE SE 1/4 OF SECTION 25, T. 1 N., R. 24 E., P.M.M.  
BILLINGS, YELLOWSTONE COUNTY, MONTANA



CERTIFICATE OF SURVEY  
No. 2465 AN